

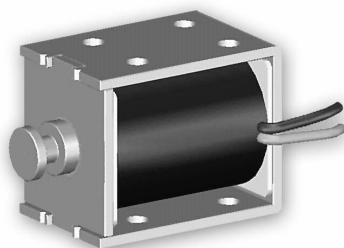


# IOEC

In&Out Electronic Corp.

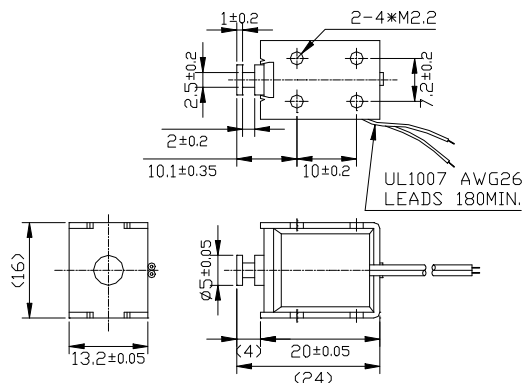
# SO-0520

## ▶ PRACTICALITY

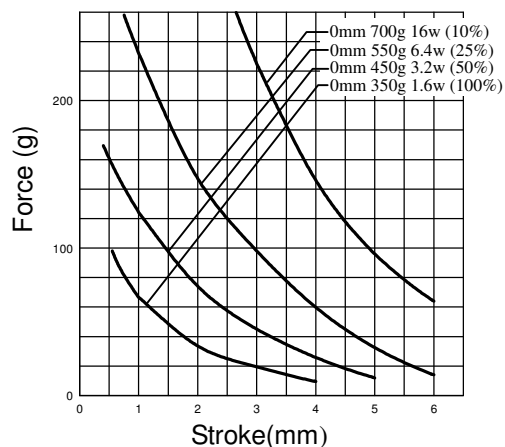


13.2\*16\*20

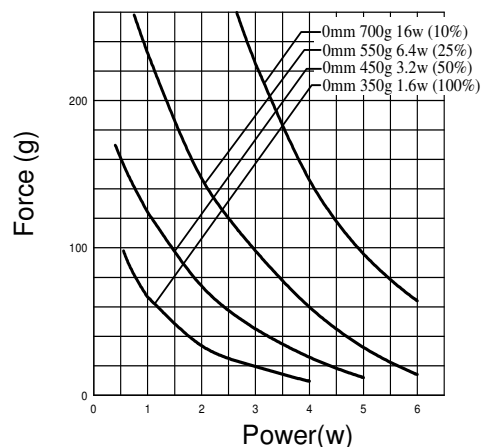
## ▶ DIMENSIONS(UNIT:MM)



## ▶ STROKE AND FORCE



## ▶ POWER AND FORCE



## ■ COIL DATA

| Duty cycle(%) $\frac{\text{"ON" time}}{\text{"ON" time} + \text{"OFF" time}} \times 100\%$ |                            |            | 100%         | 50%          | 25% | 10% |
|--|----------------------------|------------|--------------|--------------|-----|-----|
|  |                            |            | Continuous   | INTERMITTENT |     |     |
| MAX. "ON" time in seconds  |                            |            | $\infty$     | 50           | 18  | 2   |
| Watts at 20°C  |                            |            | 1.6          | 3.2          | 6.4 | 16  |
| Ampere-Turns at 20°C   |                            |            | 300          | 424          | 600 | 948 |
| Type no.   | Resistance $\Omega$ (20°C) | Coil Turns | Coil Voltage |              |     |     |
| SO-0520-6V   | 23                         | 1150       | 6            | 8.5          | 12  | 19  |
| SO-0520-12V  | 90                         | 2290       | 12           | 17           | 24  | 38  |
| SO-0520-24V  | 360                        | 4500       | 24           | 34           | 48  | 76  |
| SO-0520-48V  | 1440                       | 9000       | 48           | 68           | 96  | 152 |