

## ● Features

- 30A switching capability
- 1 Form A contact arrangement
- RoHS compliant
- Dimension: 27.7 x 23.0 x 29.5 mm  
27.7 x 23.0 x 49.5(B) mm



## ● Application

- Power Window / Compressor / Cooling Fan Control / Headlight Control / Window & Mirror Defogger, etc.

## ● Contact Data

Contact Arrangement		1A	
Contact Material		Ag Alloy	
Contact Rating		30A 14VDC	15A 28VDC
Max. Switching Power		420W	
Max. Switching Voltage		14VDC	28VDC
Max. Switching Current		30A	15A
Contact Resistance		≤ 100mΩ	
Operation life	Electrical	1x10 <sup>5</sup>	
	Mechanical	5x10 <sup>6</sup>	

## ● Coil Parameter (at 23°C)

Coil Voltage (VDC)		Coil Resistance (Ω±10%) at 23°C		Pickup Voltage (max) (VDC)	Release Voltage (min) (VDC)	Coil Power Consumption (W)	
Rated	Max.	without resistor	with R1 resistor			without resistor	with R1 resistor
12	15.6	100	87	7.8	1.2	approx.	approx.
24	31.2	400	348	16.8	2.4	1.4	1.7

### ● Operation Condition

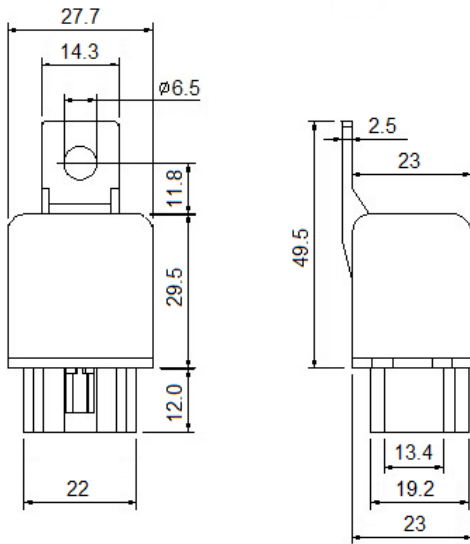
Insulation Resistance		50MΩ min (at 500VDC)
Dielectric Strength	Between Contacts	500V, 50/60Hz 1 min.
	Between Contact and Coil	500V, 50/60Hz 1 min.
Shock Resistance	Operating Extremes	10G
	Damage Limits	100G
Vibration Resistance	Operating Extremes	10~500Hz, 5.0G
	Damage Limits	10~500Hz, 5.0G
Ambient Temperature		-30~85°C (no freezing)
Operate Time		≤ 10ms
Release Time		≤ 10ms
Relative Humidity		5%~85%
Weight		Approx. 32g

### ● Ordering Information

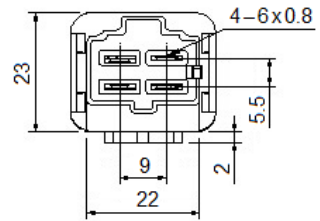
		AMB	-12D	R	(XXX)
<b>Model</b>	AM: without bracket AMB: with bracket				
<b>Coil Voltage</b>	12: 12VDC 24: 24VDC				
<b>Paralleled Component</b>	Nil: Standard R: with resistor (680Ω 12V) (2700Ω 24V) D1: with diode (please refer to diagram) D2: with diode (please refer to diagram)				
<b>Special Code</b>	Nil: Standard XXX: Customer special requirement				

● **Dimensions (UNIT: mm)**

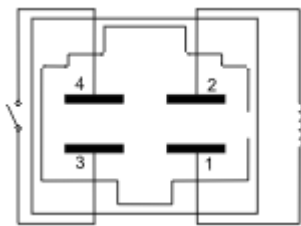
Outline Dimensions



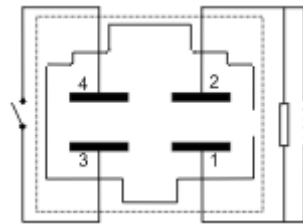
Mounting (Bottom views)



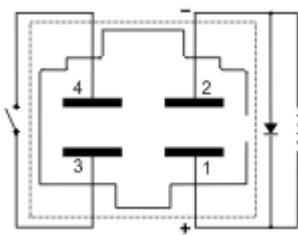
Wiring Diagram (Bottom views)



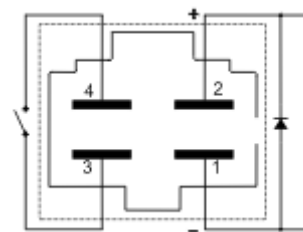
R:



D1:



D2:



Remark: 1) In case of no tolerance shown in outline dimension: outline dimension  $\leq 1\text{mm}$ , tolerance should be  $\pm 0.2\text{mm}$ ; outline dimension  $>1\text{mm}$  and  $\leq 5\text{mm}$ , tolerance should be  $\pm 0.3\text{mm}$ ; outline dimension  $>5\text{mm}$ , tolerance

should be  $\pm 0.5\text{mm}$ .

2) The tolerance without indicating for PCB layout is always  $\pm 0.1\text{mm}$ .

## Disclaimer

The specification is for reference only. See to "Terminology and Guidelines" for more information. Specifications subject to change without notice. We could not evaluate all the performance and all the parameters for every possible application. Thus the user should be in a right position to choose the suitable product for their own application. If there is any query, please contact IOEC for the technical service. However, it is the user's responsibility to determine which product should be used only.

In & Out Electronic Corporation. All rights of IOEC are reserved.