



# IOEC

In&Out Electronic Corp.

# AT

## ► FEATURES

- Contact load capacity up to 25A.
- Suitable for automobile.
- Terminal types as inserting.
- Metal cover.



AT7



AT8



AT9

∅ 30×50

## ► CONTACT DATA

TYPE	AT7	AT8	AT9
Contact Arrangement	1A	1A	1B
Contact Material	Ag·SnO <sub>2</sub> , AgNi		
Contact Rating (resistive)	22A/14VDC	22A/14VDC	15A/12VDC
Max. Switching Power	300W		
Max. Switching Voltage	75VDC Max. Switching Current:25A		
Contact Resistance or Voltage drop	≤100mV (at 30A)		
Operation life	Electrical	10 <sup>5</sup>	
	Mechanical	5*10 <sup>6</sup>	

## ► COIL PARAMETER

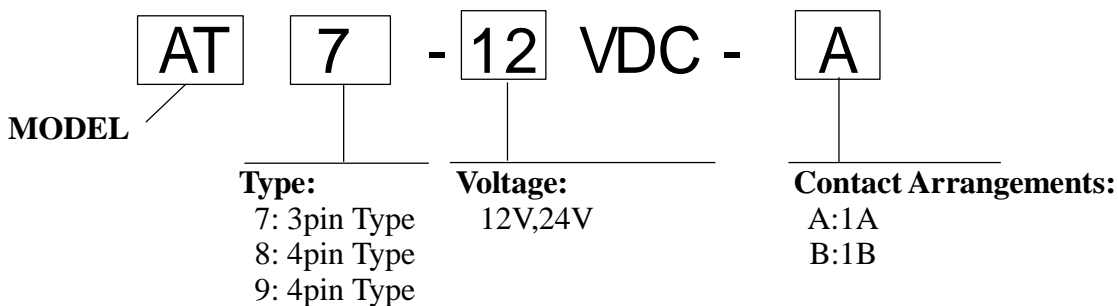
Coil voltage (VDC)	Operating Voltage Range VDC	Coil resistance (Ω±10%)	Pickup voltage(max) (VDC) (70% of rated voltage)	release voltage(min) (VDC) (10% of rated voltage)	Coil power consumption (W)	Operate Time (ms)	Release Time (ms)
12	15.6	100	8.4	1.2	1.44	≤15	≤10
24	31.2	400	16.8	2.4			

**CAUTION:** 1.The use of any coil voltage less than the rated coil voltage will compromise the operation of the relay.  
2.Pickup and release voltage are for test purposes only and are not to be used as design criteria.

## ► OPERATION CONDITION

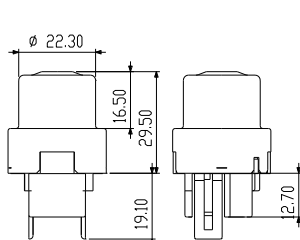
Insulation Resistance	100MΩ min (at 500VDC)
Dielectric Strength	
Between contacts	50Hz 500V
Between contact and coil	50Hz 750V
Shock resistance	147m/s <sup>2</sup> 11ms
Vibration resistance	10~60Hz    double amplitude    1.5mm
Terminals strength	8N
Solder ability	250°C ± 2°C    3 ± 0.5s
Ambient Temperature	-40~70°C
Relative Humidity	85% (at 40°C)
Weight	28g

**► ORDERING INFORMATION**

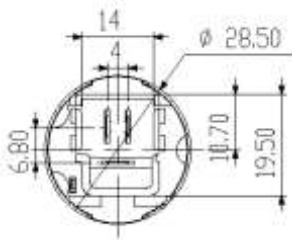


**► DIMENSIONS (UNIT: mm)**

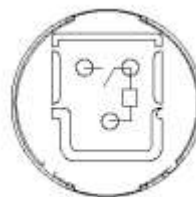
AT7:



Dimensions

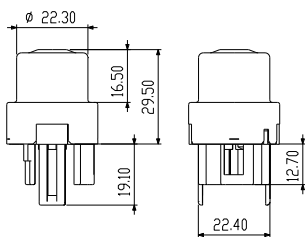


Mounting (Bottom views)

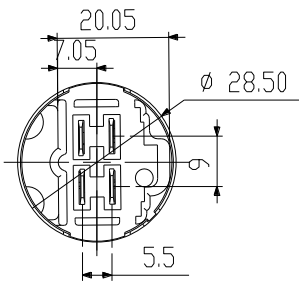


Wiring diagram(Bottom views)

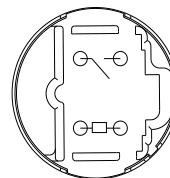
AT8:



Dimensions

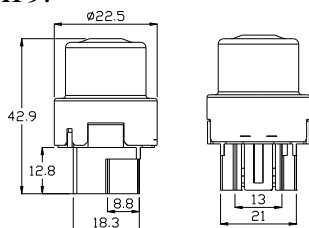


Mounting (Bottom views)

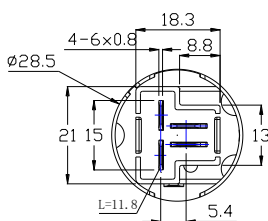


Wiring diagram(Bottom views)

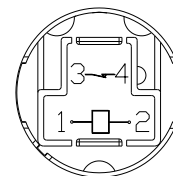
AT9:



Dimensions



Mounting (Bottom views)



Wiring diagram(Bottom views)

**NOTES** 1).Dimensions are in millimeter.  
 2).Inch equivalents are given for general information only.