

● Features

- 25A motor locked load
- Extremely small relay
- Change-over contact version
- 1 Form A & 1 Form C contact arrangement
- Plastic sealed and dust protected types available
- Environmental friendly product (RoHS compliant)
- Dimension: 14.0 x 7.2 x 13.5 mm



● Application

Central Door Lock / Power Doors and Windows / Indicator Lamp Control / Seat Adjustment / Sunroof Motor Control / Mirror Adjustment / Wiper Control, etc.

● Contact Data

Contact Arrangement	1A	1C
Contact Material	Ag Alloy	
Contact Rating	25A 16VDC	
Max. Switching Power	400W	
Max. Switching Voltage	16VDC	
Max. Switching Current	30A	
Min. Contact Load	1A 6VDC	
Voltage Drop (initial)	Typ. 50mV (at 10A) Typ. 250mV (at 10A)	
Contact Resistance	≤100mΩ	
Electrical Endurance	1x10 ⁵	
Mechanical Endurance	1x10 ⁷	

● Coil Parameter (at 23°C)

Coil Voltage (VDC)		Coil Resistance ($\Omega \pm 10\%$)	Pickup Voltage(max) (VDC)	Release Voltage(min) (VDC)	Coil Power Consumption (W)
Rated	Max.				
12	13.2	225	7.20	1.20	0.64
12	13.2	180	6.50	1.20	0.80

● Operation Condition

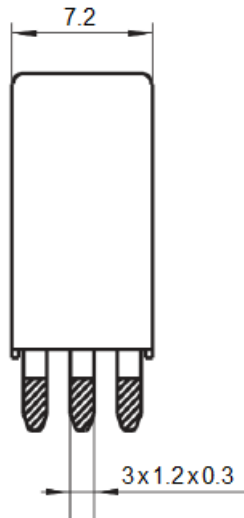
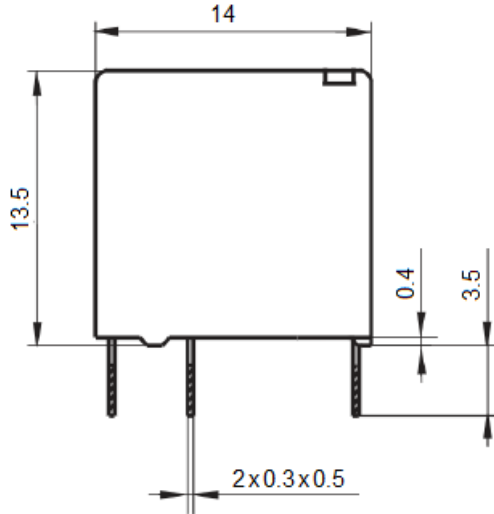
Insulation resistance		100M Ω min (at 500VDC)
Dielectric Strength	Between Contacts	500V, 50/60Hz 1 min.
	Between Contact and Coil	500V, 50/60Hz 1 min.
Shock Resistance		98m/s ²
Vibration Resistance		10~500Hz, 5.0G
Ambient Temperature		-40~105°C (no freezing)
Operate Time		≤ 10 ms
Release Time		≤ 10 ms
Weight		Approx. 4.0g

● Ordering Information

		A8	-12D	80	-C	-S	(XXX)
Model							
Coil Voltage	12: 12VDC						
Coil Power	Nil: 0.64W 80: 0.80W						
Contact Arrangement	A: 1 Form A C: 1 Form C						
Construction	Nil: Flux tight S: Sealed						
Special Code	Nil: Standard XXX: Customer special requirement						

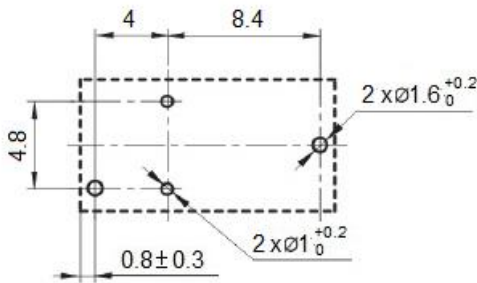
● Dimensions (UNIT: mm)

Outline Dimensions

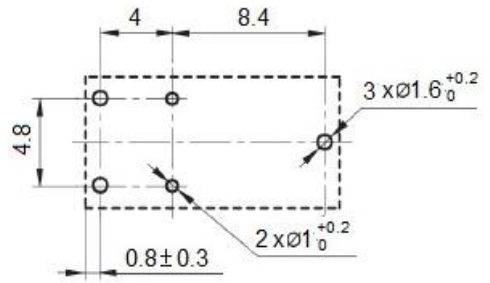


Mounting (Bottom views)

1 Form A

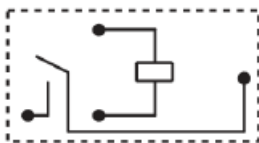


1 Form C

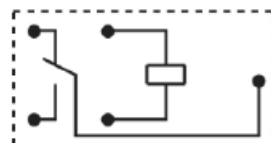


Wiring Diagram (Bottom views)

1 Form A



1 Form C





- Remark: 1) In case of no tolerance shown in outline dimension: outline dimension $\leq 1\text{mm}$, tolerance should be $\pm 0.2\text{mm}$; outline dimension $> 1\text{mm}$ and $\leq 5\text{mm}$, tolerance should be $\pm 0.3\text{mm}$; outline dimension $> 5\text{mm}$, tolerance should be $\pm 0.4\text{mm}$.
- 2) The tolerance without indicating for PCB layout is always $\pm 0.1\text{mm}$.

Disclaimer

The specification is for reference only. See to "Terminology and Guidelines" for more information. Specifications subject to change without notice. We could not evaluate all the performance and all the parameters for every possible application. Thus the user should be in a right position to choose the suitable product for their own application. If there is any query, please contact IOEC for the technical service. However, it is the user's responsibility to determine which product should be used only.

In & Out Electronic Corporation. All rights of IOEC are reserved.